

Why OSSuite for Capital Projects and Turnarounds?

Because cost overruns on capital projects are not uncommon, and on large capital projects, cost overruns can range from \$750,000 - \$2,000,000 per day. OS can routinely save clients on their capital projects through managing complex projects for predictability in their outcome. **The OSSuite™ Turnaround Work Process** comes pre-loaded with a vast library of job-aids, real world examples, and guidance documents. From Concept and Design, through Construction, Startup and Operate – we are here to help. Our tools put the shared knowledge of your people and the proven expertise of our people into one integrated system and then we put it to work on your project or turnaround. It's smarter Project Management and robust portfolio management.

How Big is the Need?

Effective wrench time of only 2 hours in an 8-hour shift is not uncommon along with crews waiting on permits for 1-2 hours per shift. We can fix this, boosting effective wrench time and reducing time and cost overruns.

Why?

Experience enterprise-wide recurring annual benefits of \$189,000,000–\$245,000,000 (20 year life) and one-time benefit of \$135,000,000–\$175,000,000 on a single project of \$1.5 to \$3.0 Billion.

OSSuite™ comes with out-of-the-box integration with SAP PM (Project Manager) and project planning tools such as Microsoft Project. OS also offers a project-planning tool via www.verified-market.com to tackle your projects. We offer experienced on-site available staff to mentor and assist with your turnarounds.

Capital Effectiveness Outcomes

Poor planning and work permitting are challenges in many projects

- We act as external **project managers** to help guide you through your capital projects and STOs
- Act as part of your team to drive **results** and **accountability**
- **Improved communication at every step**
- We offer comprehensive **scheduling** capabilities
- We help you **create work processes**
- **Project milestones**, deliverables, **cost estimates**, comprehensive project support
- Develop a **detailed** action plan for each **turnaround or capital project**
- Pre-turn around **planning and contracting** strategies

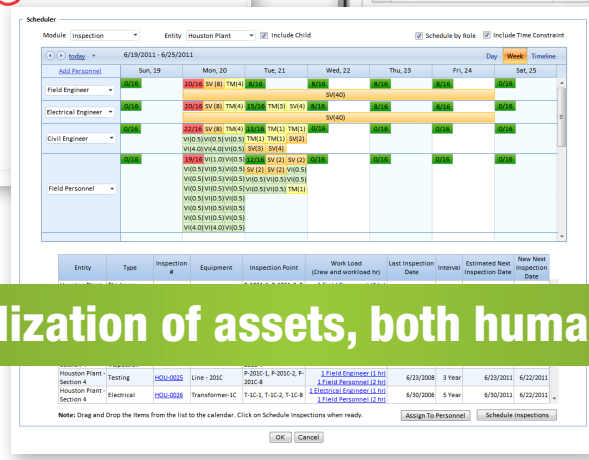
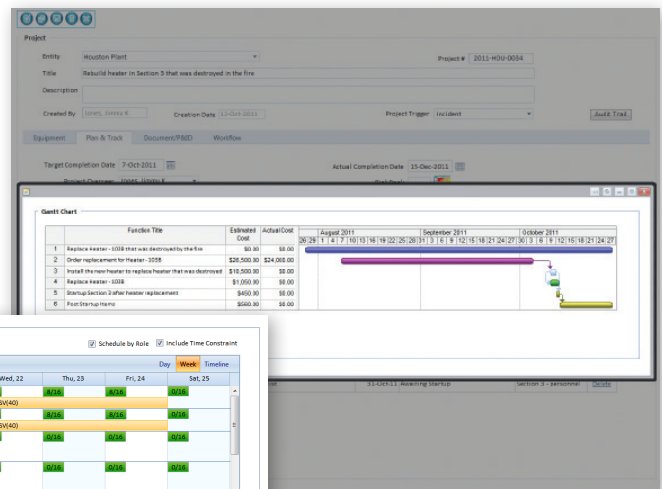
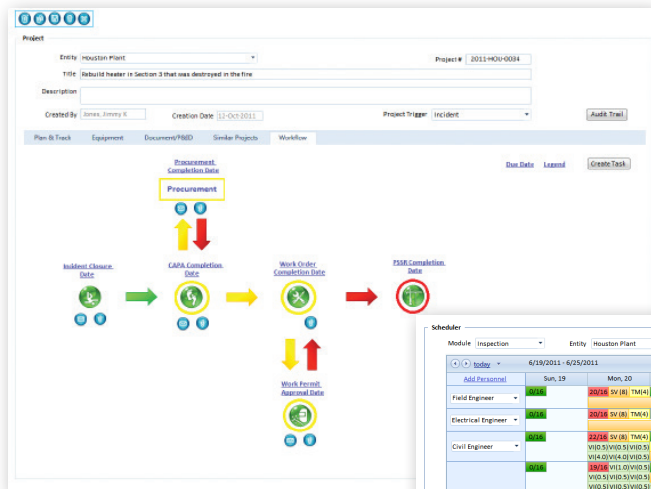
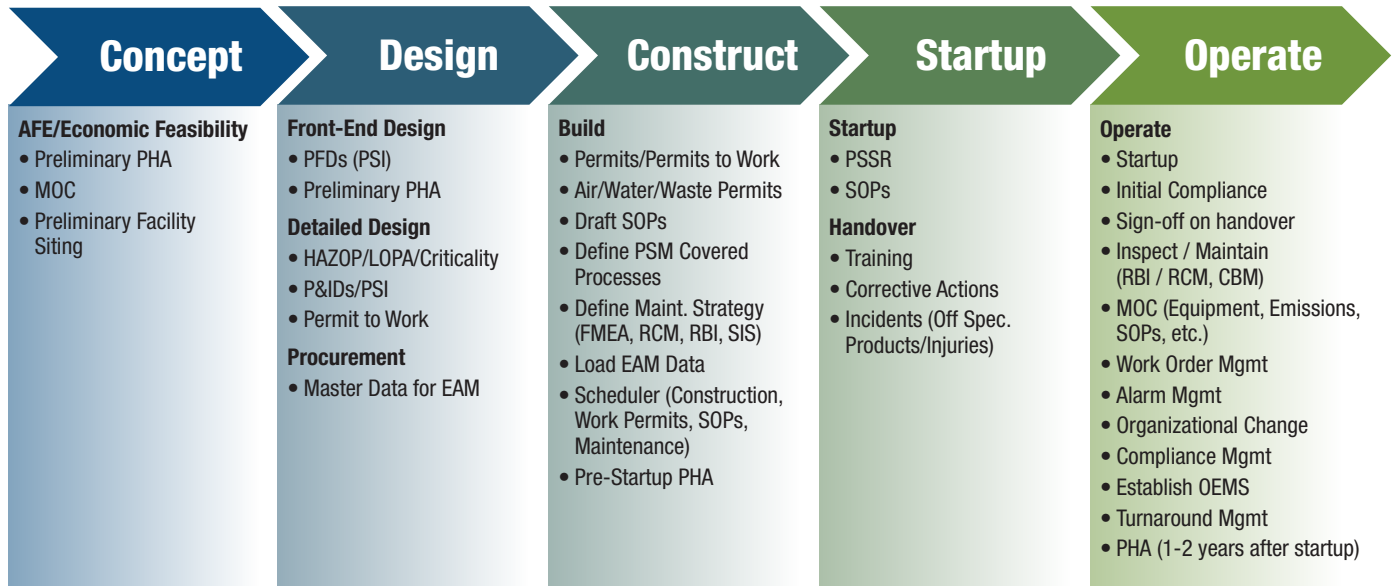
Safer, more predictable projects and turnarounds completed on time, on budget, and with less down time overall.





MANAGE Operational Risk. ACHIEVE Sustainable Operations.

Blueprint for Capital Projects



More efficient utilization of assets, both human and equipment.

Visit www.os-orm.com or email info@os-orm.com for more information.